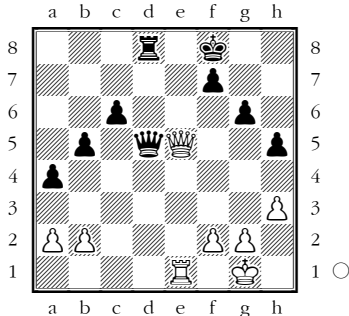
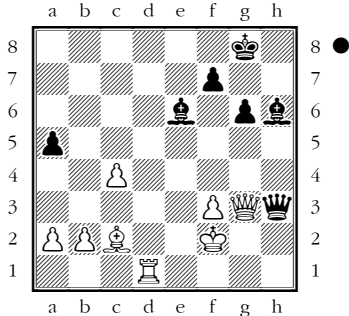
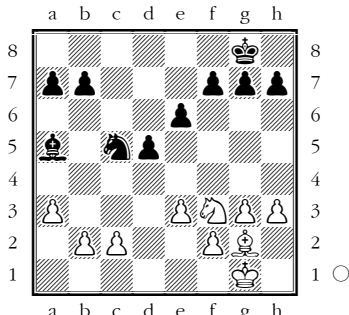
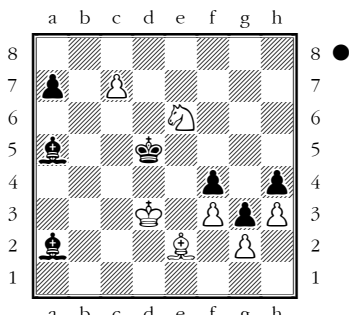


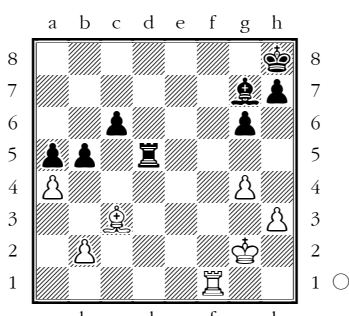
Schachtaktik

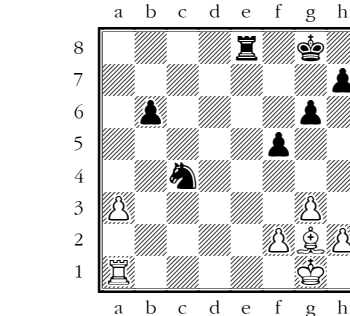
1  1 ○

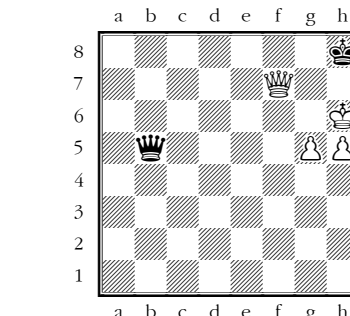
2  2 ●

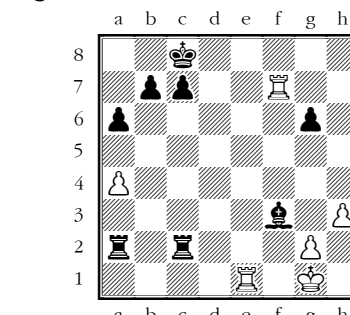
3  3 ○

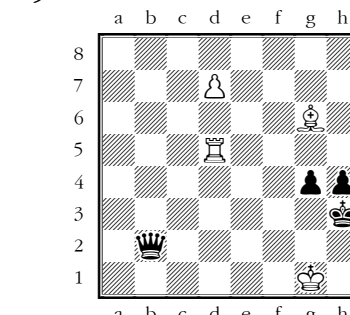
4  4 ●

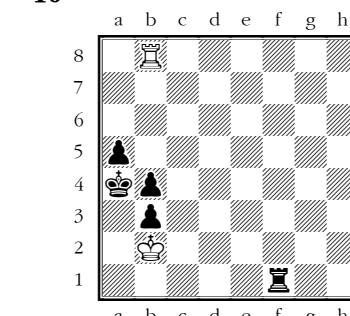
5  5 ○

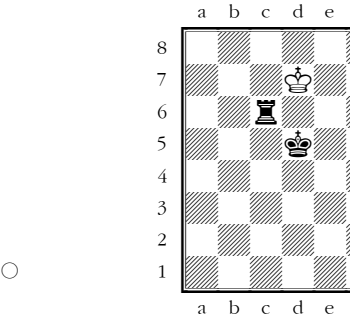
6  6 ○

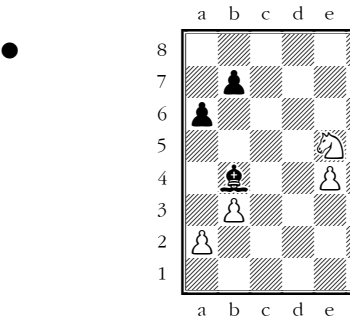
7  7 ●

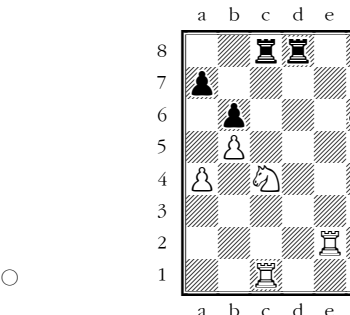
8  8 ○

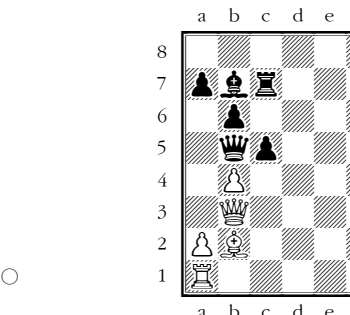
9  9 ○

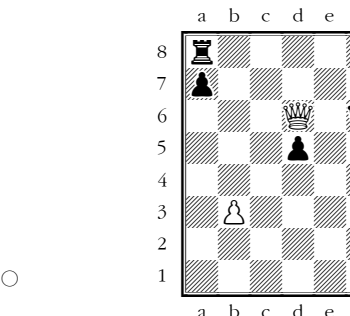
10  10 ○

11  11 ○

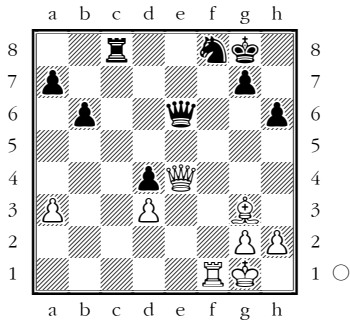
12  12 ●

13  13 ●

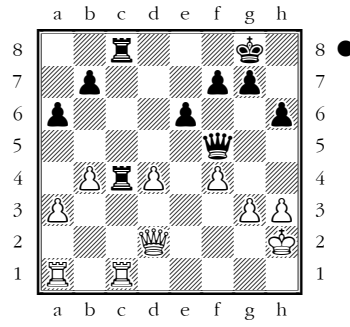
14  14 ○

15  15 ○

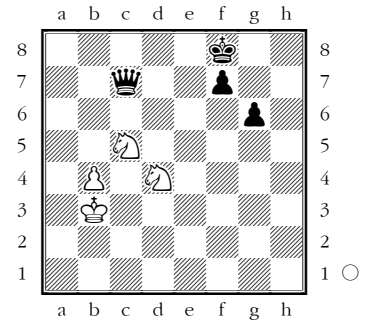
16



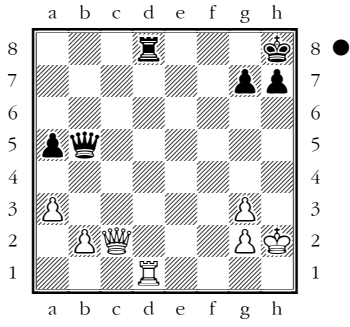
21



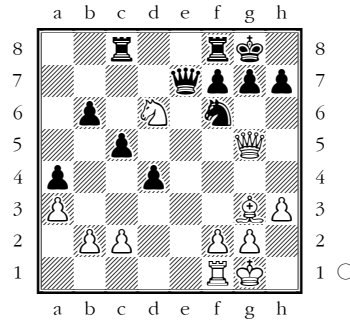
26



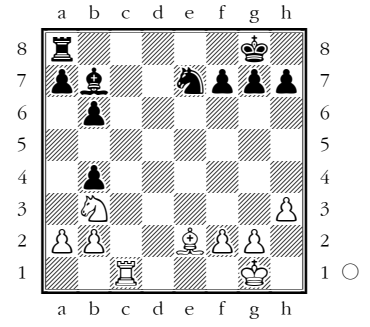
17



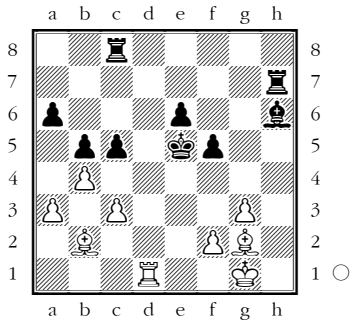
22



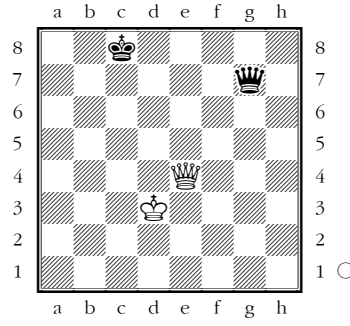
27



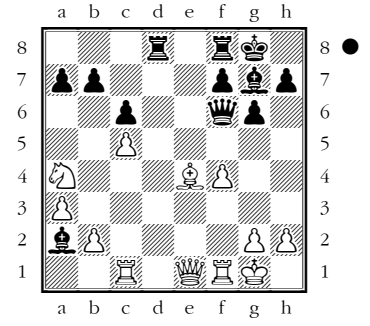
18



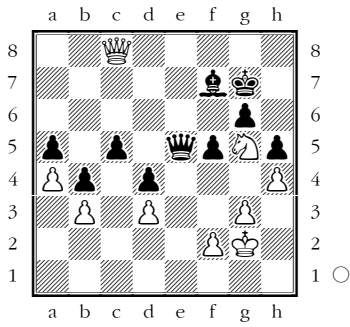
23



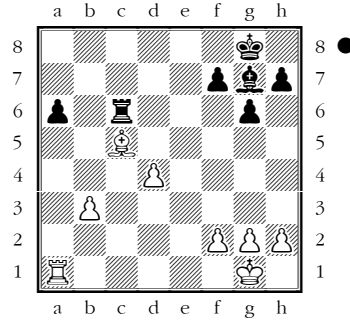
28



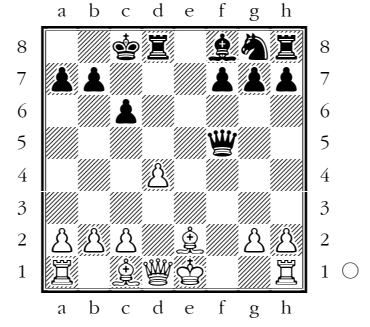
19



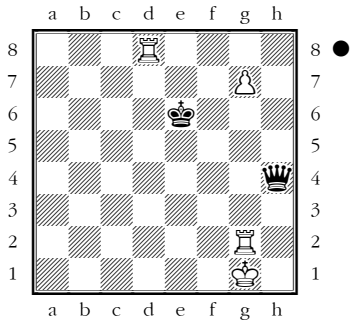
24



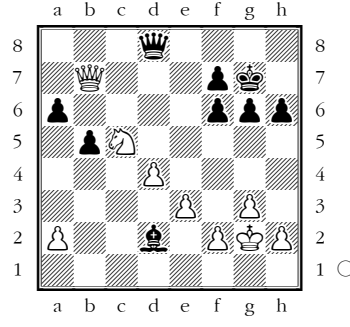
29



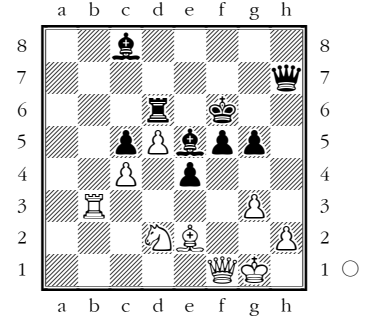
20



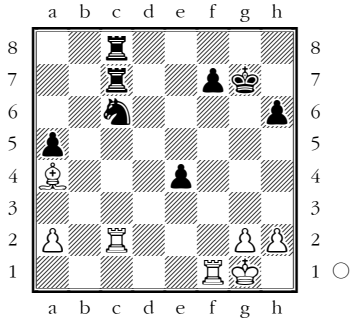
25



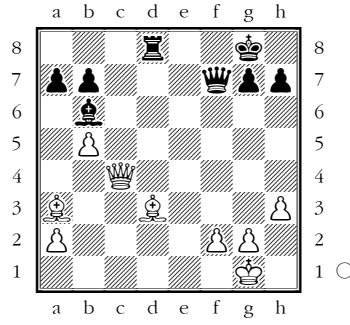
30



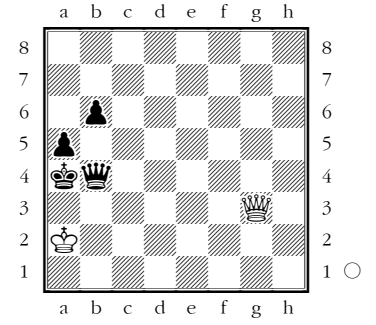
31



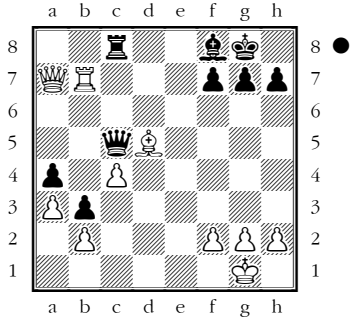
36



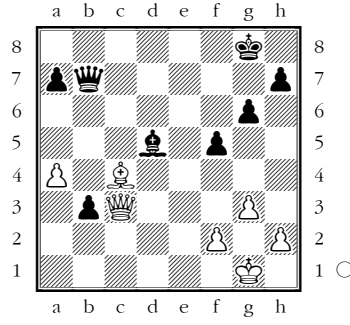
41



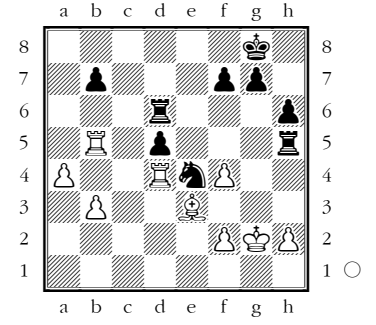
32



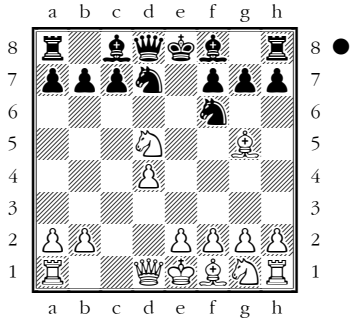
37



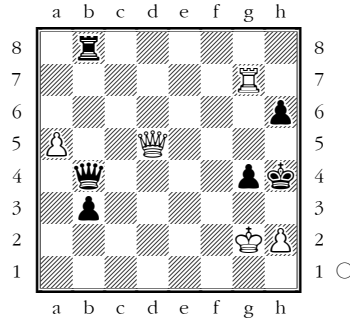
42



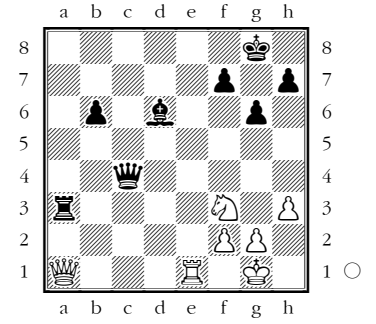
33



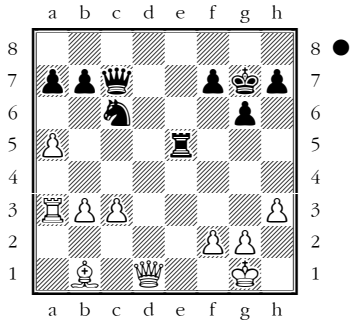
38



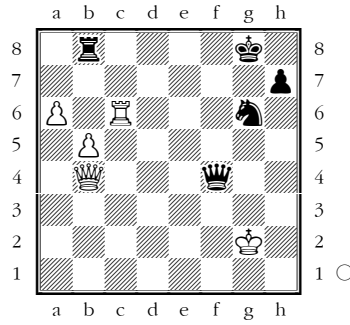
43



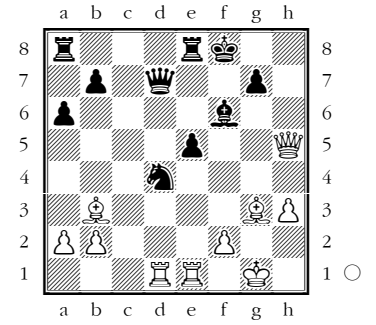
34



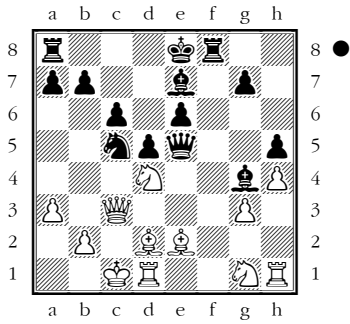
39



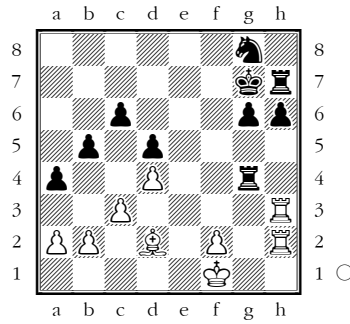
44



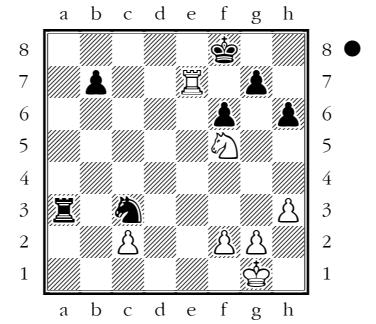
35



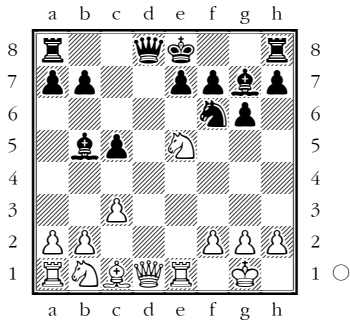
40



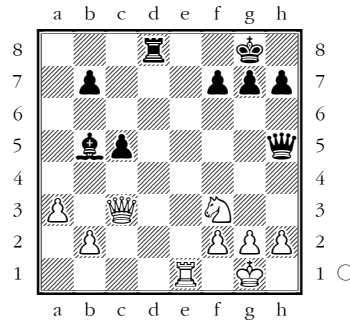
45



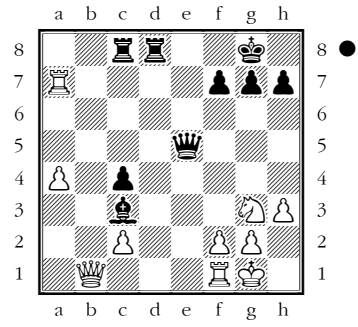
46



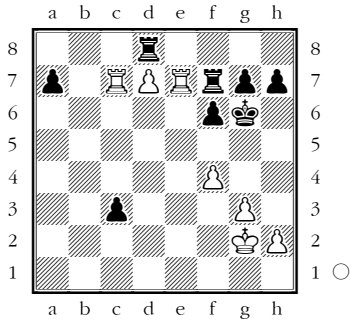
51



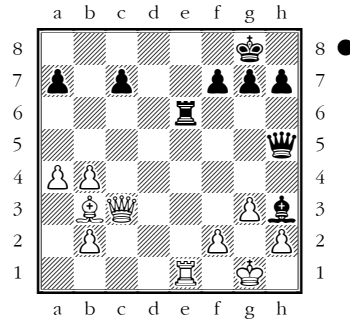
56



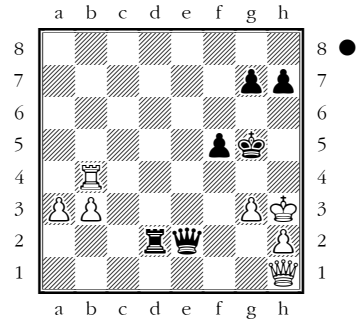
47



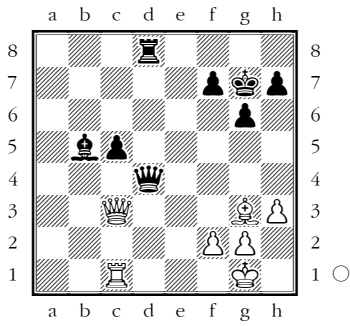
52



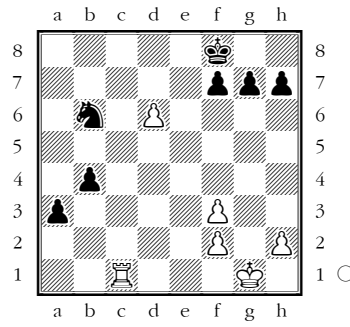
57



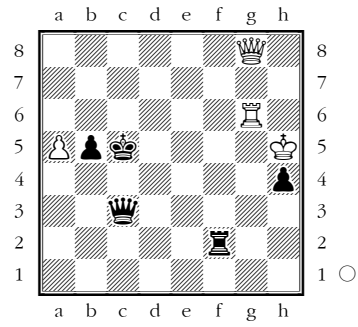
48



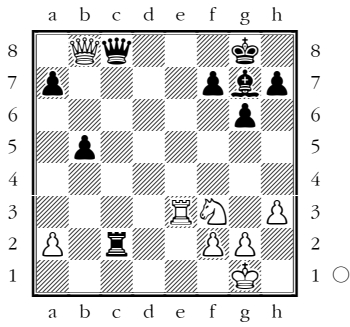
53



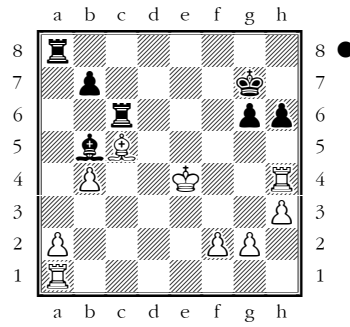
58



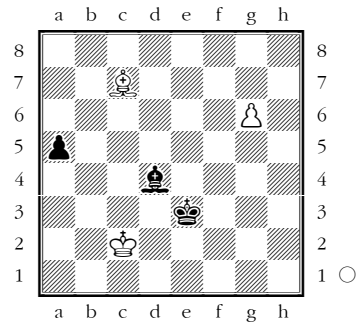
49



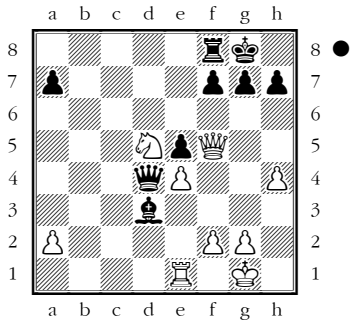
54



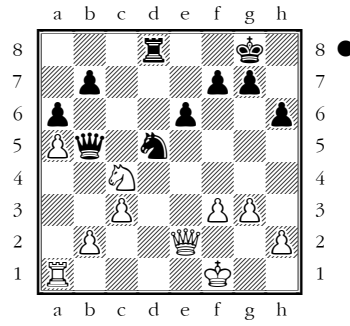
59



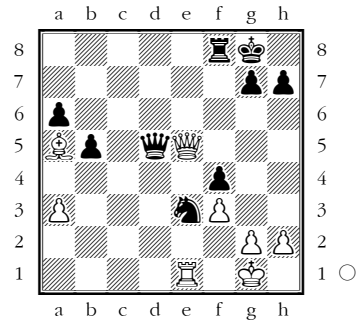
50



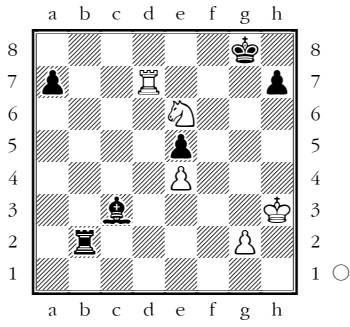
55



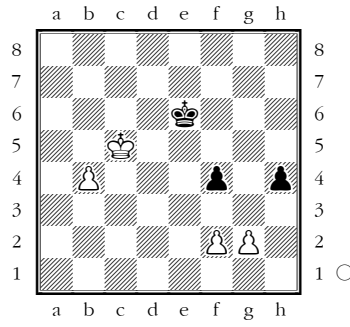
60



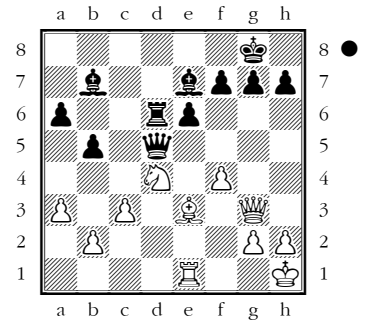
61



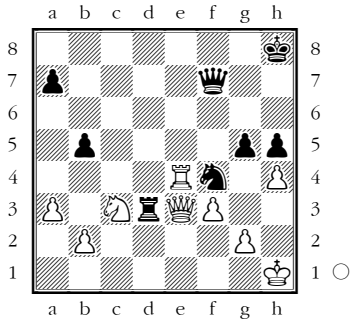
66



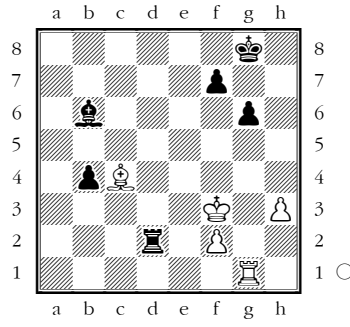
71



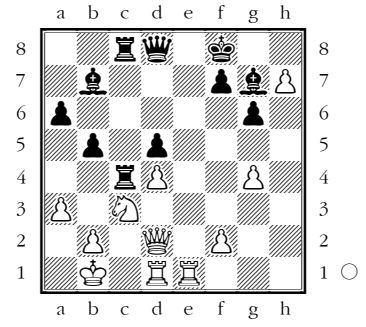
62



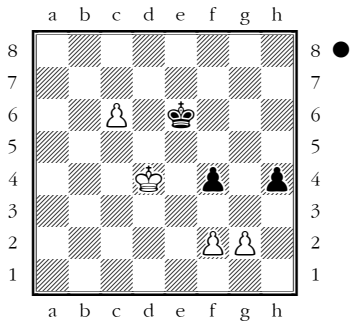
67



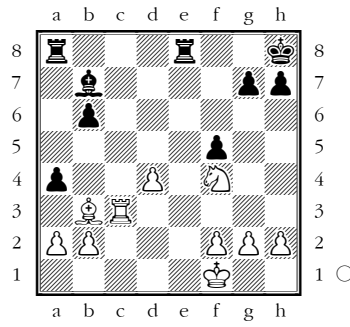
72



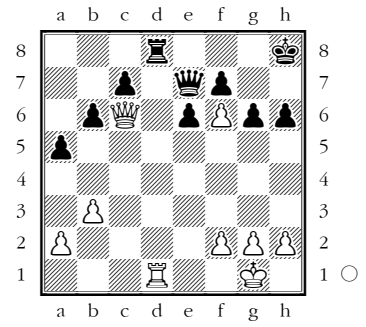
63



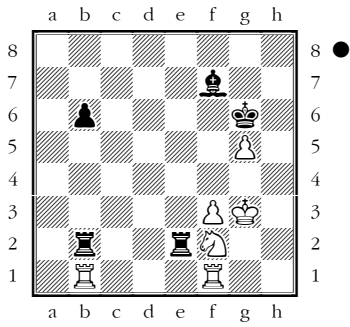
68



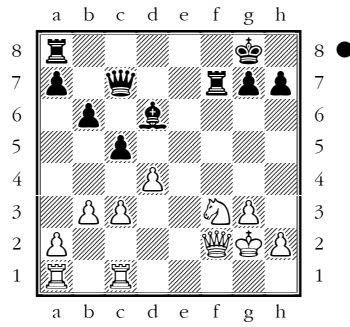
73



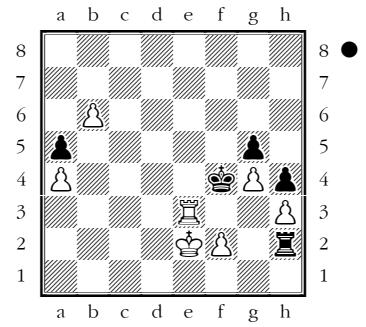
64



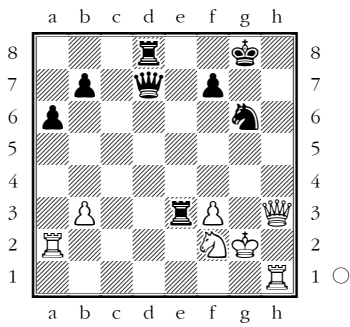
69



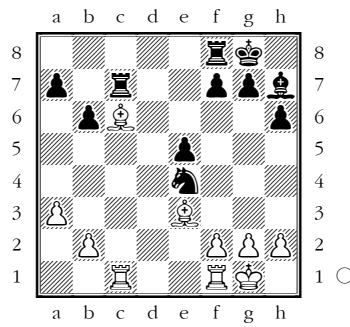
74



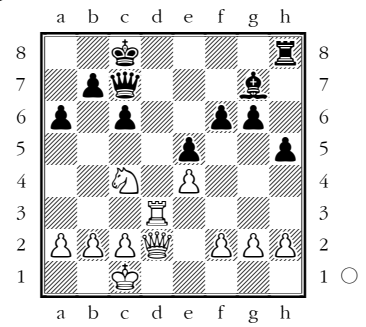
65



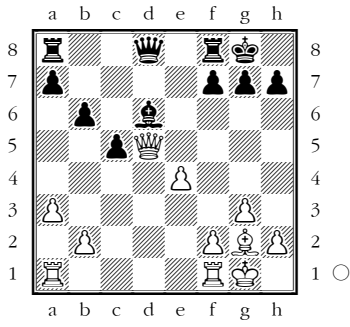
70



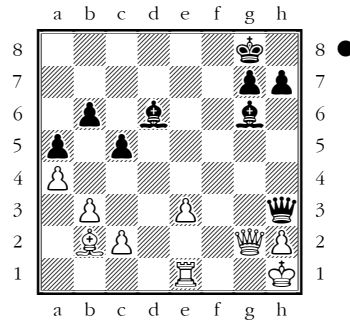
75



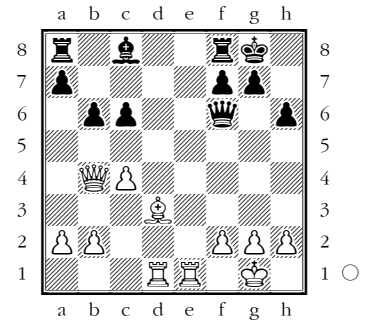
76



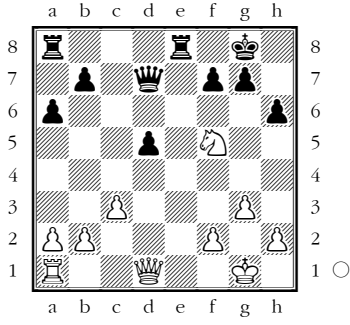
81



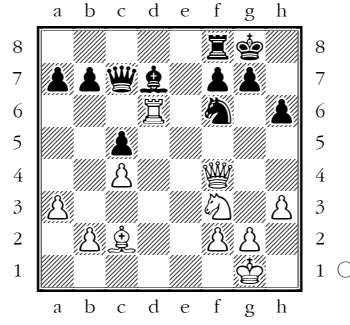
86



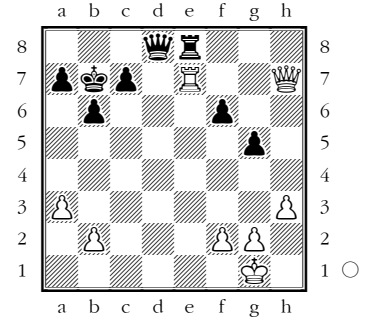
77



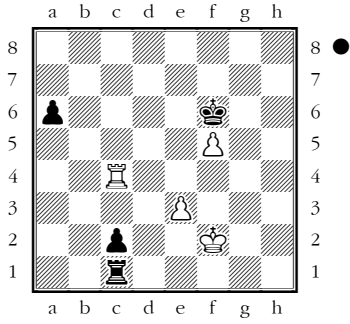
82



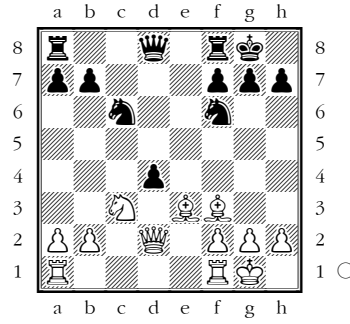
87



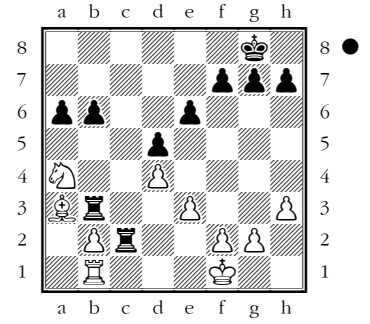
78



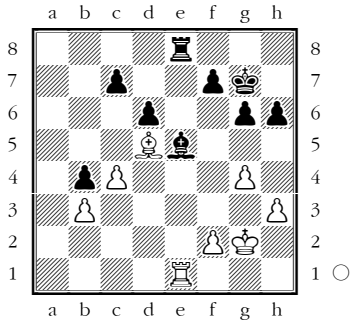
83



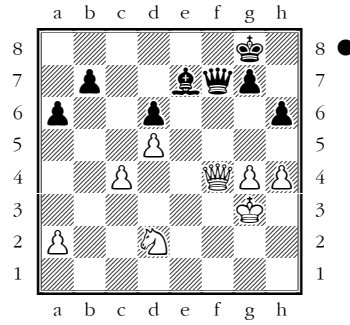
88



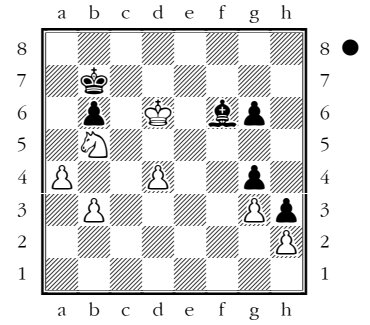
79



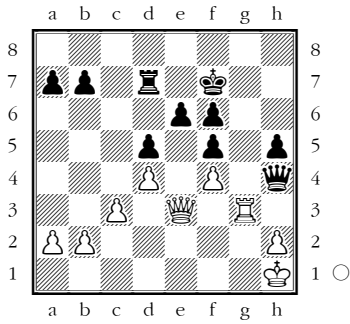
84



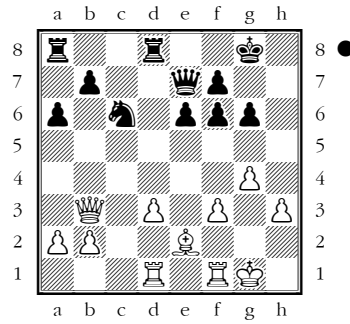
89



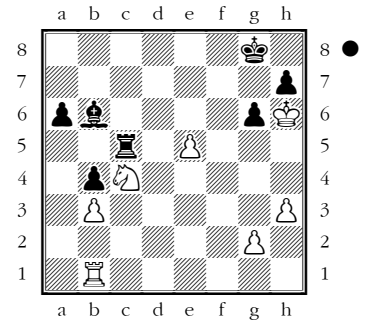
80



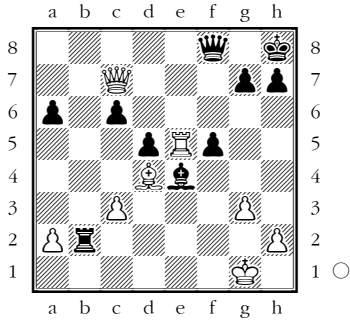
85



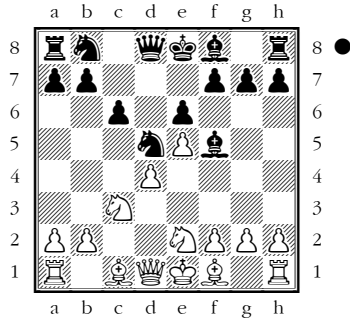
90



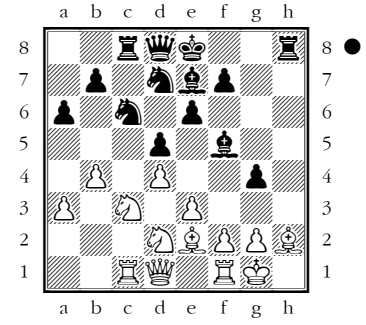
91



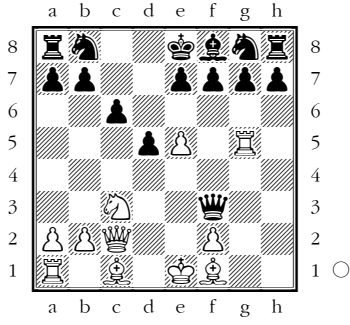
96



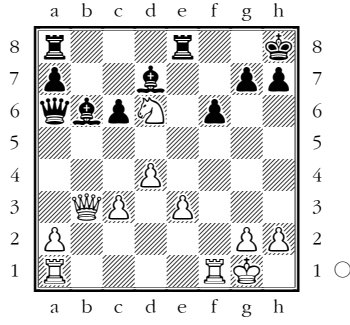
101



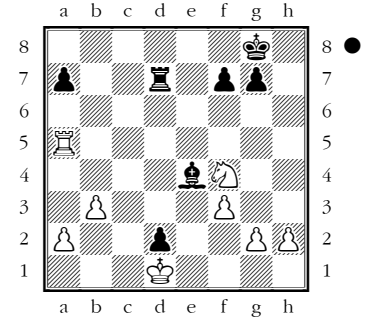
92



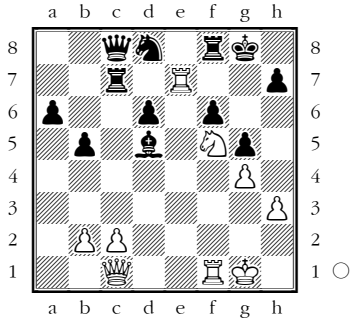
97



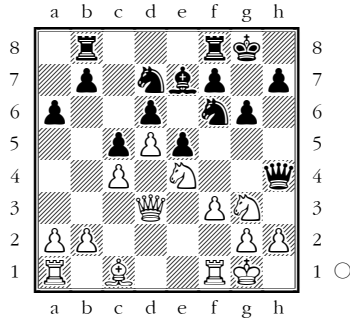
102



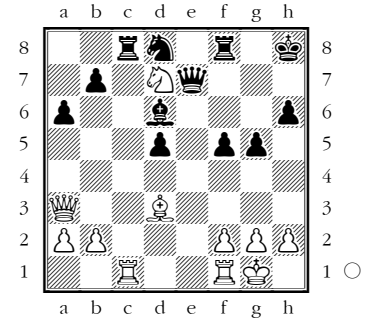
93



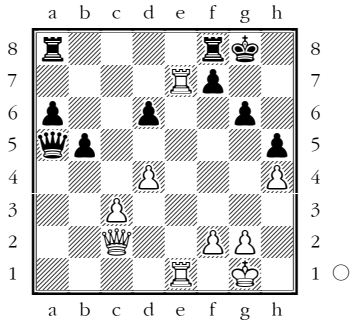
98



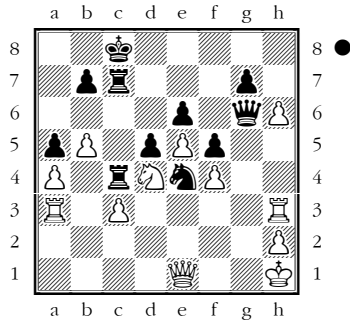
103



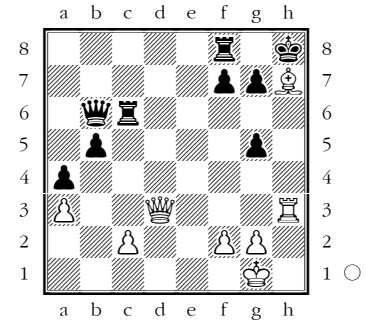
94



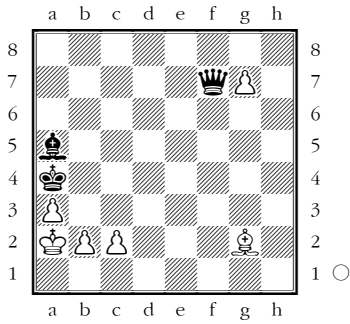
99



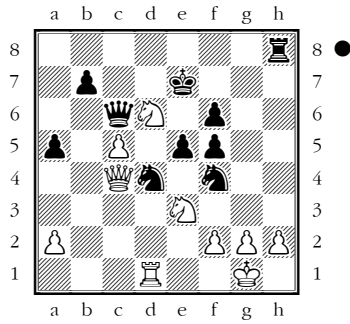
104



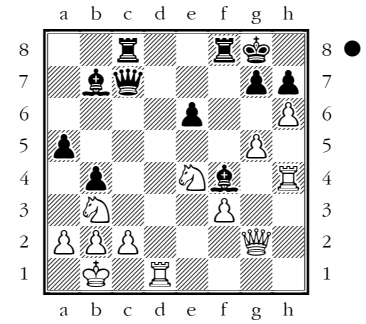
95



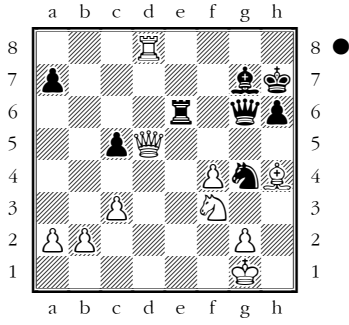
100



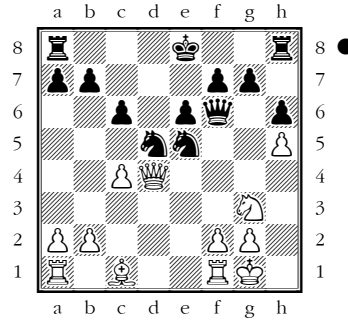
105



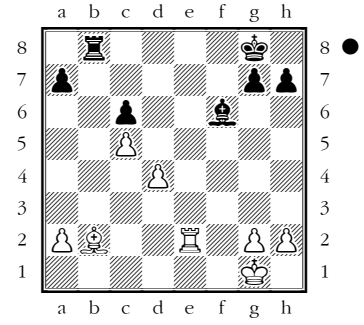
106



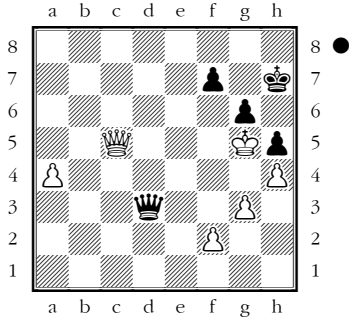
111



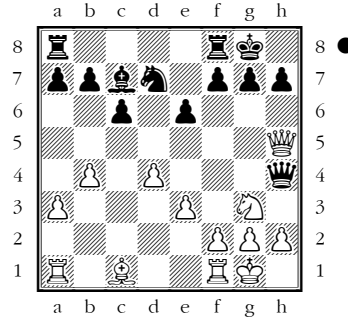
116



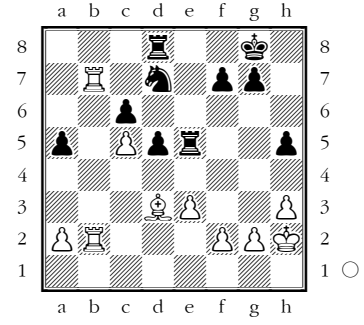
107



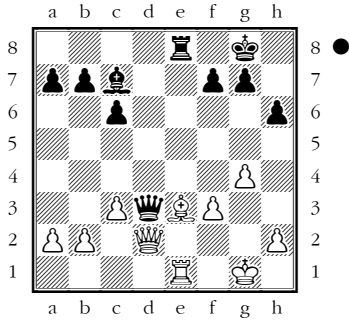
112



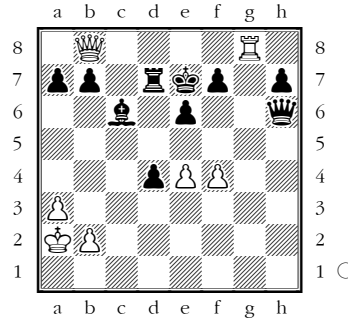
117



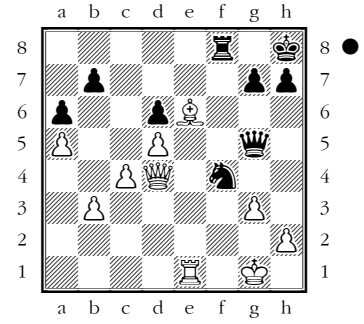
108



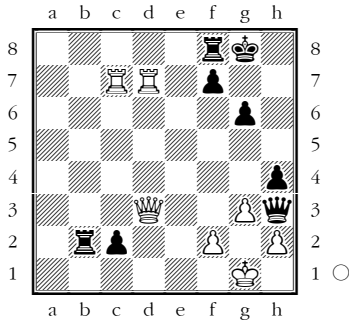
113



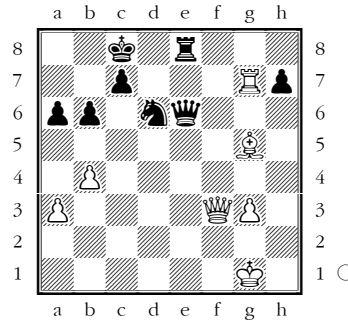
118



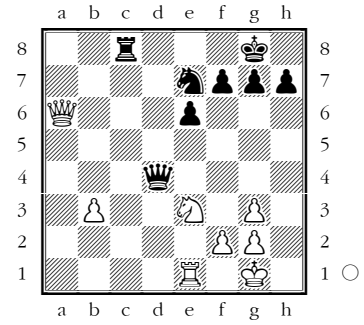
109



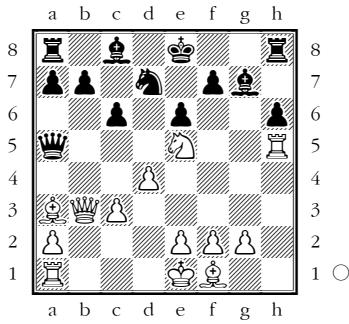
114



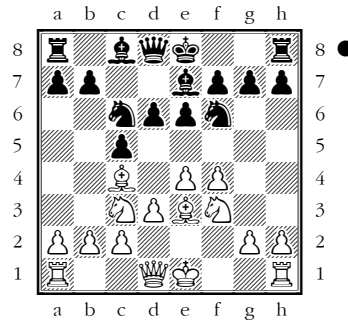
119



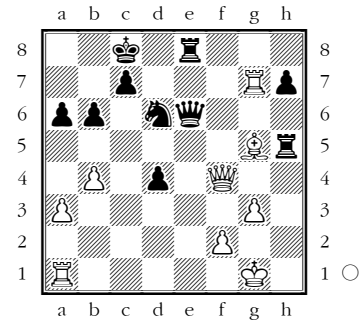
110



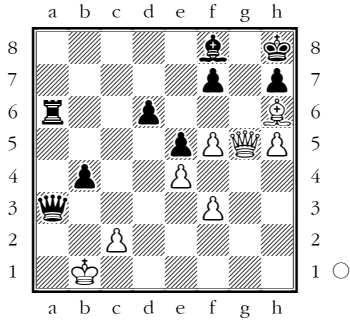
115



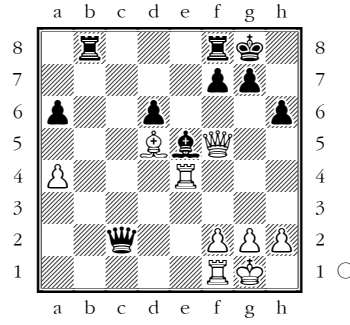
120



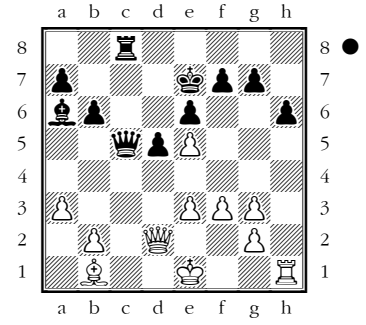
121



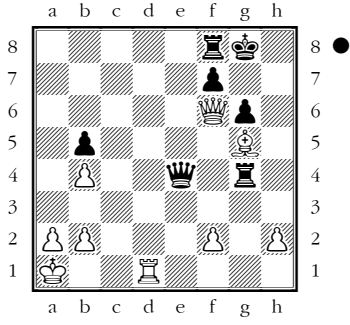
126



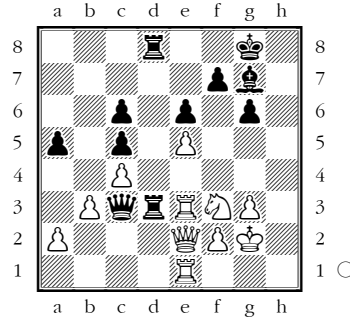
131



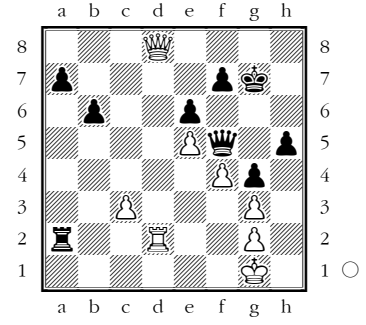
122



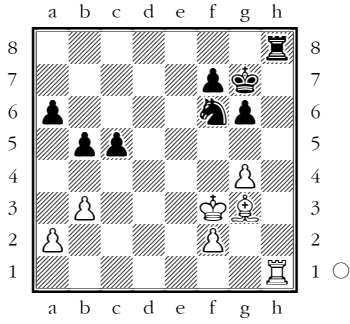
127



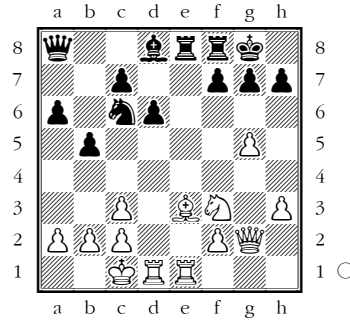
132



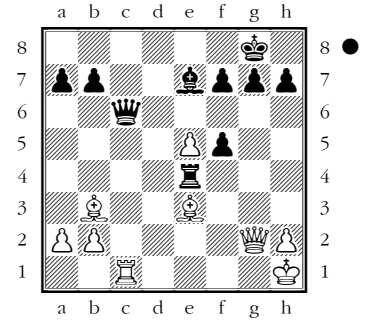
123



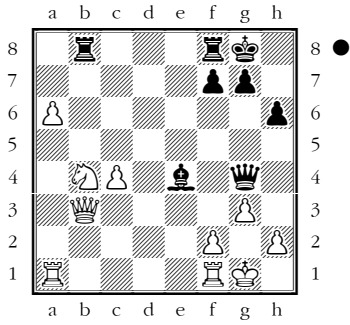
128



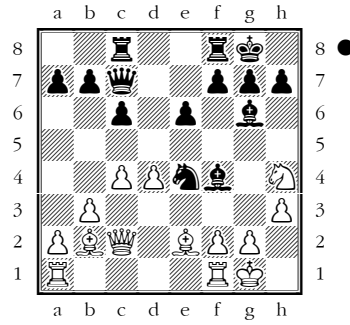
133



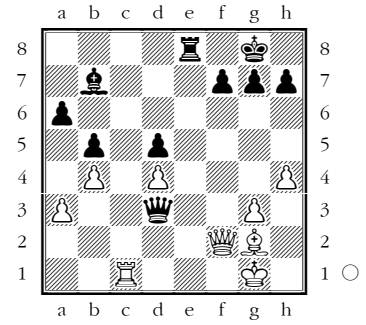
124



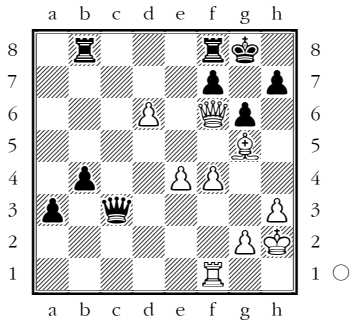
129



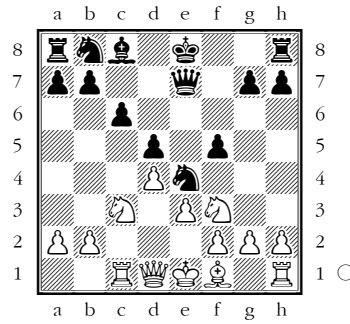
134



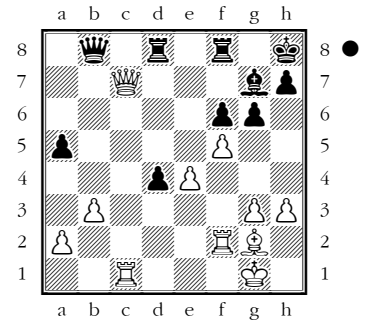
125



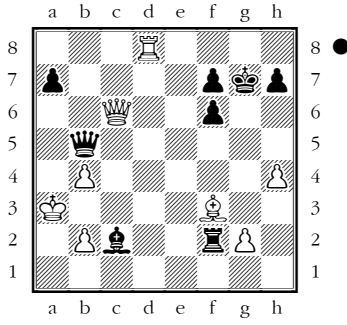
130



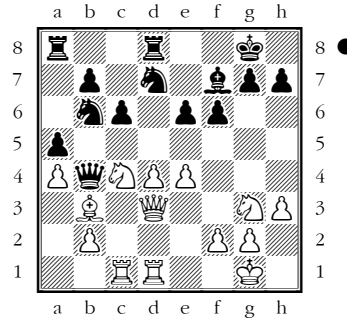
135



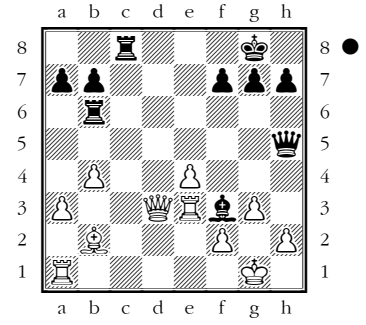
136



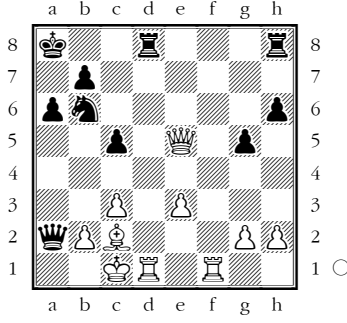
141



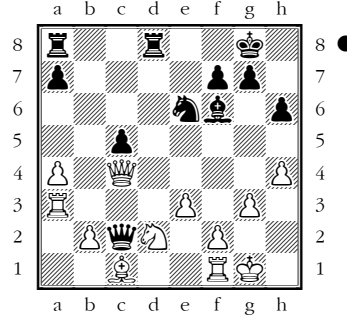
146



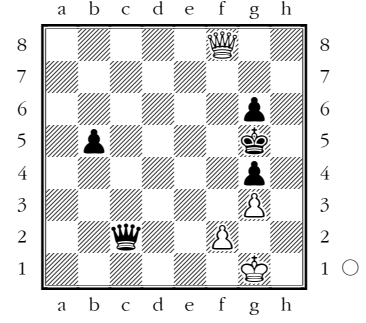
137



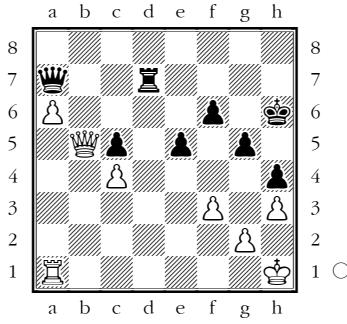
142



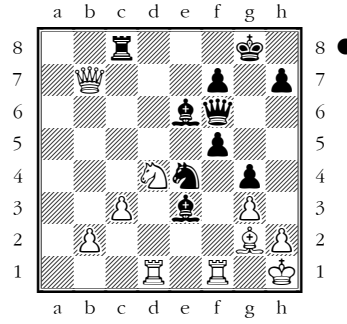
147



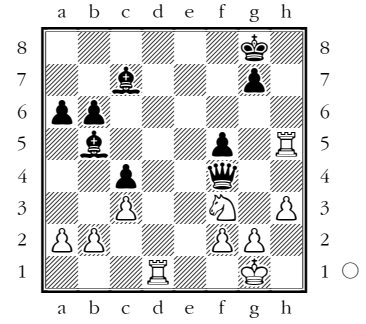
138



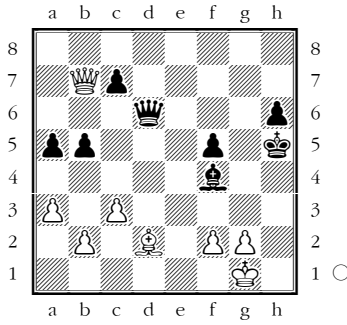
143



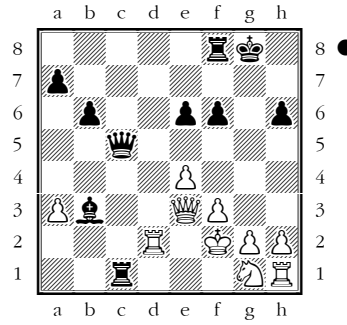
148



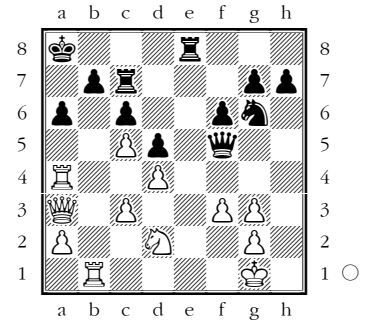
139



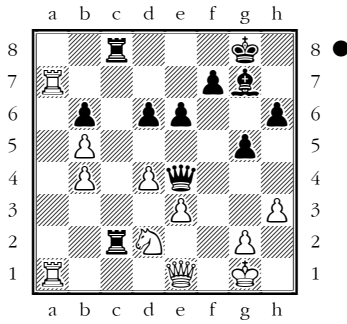
144



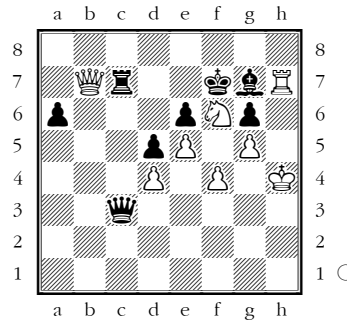
149



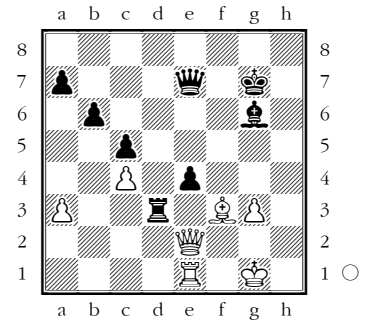
140



145



150



Lösungen

- 1: 1.♖h8#
- 2: 1...♙e3+ 2.♗xe3 ♖xg3 mit Damengewinn
- 3: 1.b4 gewinnt eine Figur
- 4: 1...♙b1#
- 5: 1.♞f8#
- 6: 1.♙d5+ gewinnt eine Figur
- 7: 1...♖xg5+ 2.♗xg5 patt
- 8: 1.♞e8#
- 9: 1.♞d3+ [1.d8♖? ♖g2#] 1...g3 2.♙f5#
- 10: 1.♞xb4+ axb4 [1...♗xb4] patt
- 11: 1.♞h5+ [1.♞xh2? ♞g6=] 1...♗e4 2.♗xc6 gewinnt den Turm
- 12: 1...♙d6 fesselt und gewinnt den Springer
- 13: 1...♞xc4 gewinnt eine Figur (2.♞xc4 ♞d1+ 3.♞e1 ♞xe1#)
- 14: 1.♖g3. Doppeldrohung. Droht Matt auf g7, gewinnt den Turm auf c7
- 15: 1.♞h6+ ♗xh6 2.♖xf6+
- 16: 1.♞xf8+ ♗xf8 2.♖xe6
- 17: 1...♖h5+ 2.♗g1 ♖xd1 gewinnt den Turm
- 18: 1.c4#
- 19: 1.♖h8+ ♗xh8 2.♗xf7+ ♗g7 3.♗xe5 gewinnt eine Figur
- 20: 1...♖e1+ 2.♗h2 ♖h4+ 3.♗g1 ♖e1+ ... Dauerschach
- 21: 1.♞c2 gewinnt die Dame für einen Turm
- 22: 1.♗f5. Doppelangriff: Matt auf g7, Dame auf e7
- 23: 1.♖a8+ ♗d7 2.♖a7+ nebst ♖xg7
- 24: 1...♞xc5 gewinnt eine Figur (2.dxc5 ♙xa1)
- 25: 1.♗e6+ gewint die Dame
- 26: 1.♗ce6+ (oder 1.♗de6+) fxe6 2. ♗xe6+ und Damengewinn
- 27: 1.♞c7. Doppelangriff – gewinnt den Läufer oder Springer
- 28: 1...♖d4+ nebst 2...♖xa4 gewinnt den Springer
- 29: 1.♙g4 fesselt und gewinnt die Dame
- 30: 1.♗xe4+ gewinnt einen Bauern und die Qualität
- 31: 1.♞fc1. Fesselt und gewinnt den Springer c6
- 32: 1...♖xd5 gewinnt eine Figur (2.cxd5 ♞c1#)
- 33: 1...♗xd5 2.♙xd8 ♙b4+ 3.♖d2 ♙xd2+ 4.♗xd2 ♗xd8 gewinnt eine Figur
- 34: 1...♖e7. Doppeldrohung ♖xa3 und ♞e1+ (gewinnt die Dame für den Turm)
- 35: 1...♖xd4 2.♖xd4 ♗b3+. Springergabel, gewinnt eine Figur
- 36: 1.♙xh7+ Ablenkung und Damengewinn: 1...♗xh7 2.♖xf7
- 37: 1.♖f3 Kreuzfesselung, gewinnt den Läufer (1...♙xc4 2.♖xb7)
- 38: 1.♖g5+ hxg5 2.♞h7#
- 39: 1.♞xg6+ hxg6 2.♖xf4
- 40: 1.f3 gewinnt den Turm g4
- 41: 1.♖d3 (Zugzwang) b5 (1...♖b5 2.♖a3#; 1...♖c5 2.♖b3#) 2.♖c2+ ♖b3+ 3.♖xb3#
- 42: 1.♞xe4. Figurengewinn.
- 43: 1.♞e8+ ♙f8 2.♖xa3. Turmgewinn
- 44: 1.♞xd4 gewinnt eine Figur wegen 1...♖xd4 2.♖f7# oder 1...exd4 2.♖h8#
- 45: 1...g6 gewinnt den Springer, der nicht wegziehen kann, weil er den Turm decken muss
- 46: 1.♖b3. Gewinnt eine Figur. Doppelangriff auf ♙b5 und f7 (matt)
- 47: 1.f5+. Ablenkung des Königs, Turmgewinn
- 48: 1.♙e5+. Damengewinn
- 49: 1.♞e8+. Damengewinn
- 50: 1...♖xd5. Figurengewinn (2.exd5 ♙xf5)
- 51: 1.♖a5. Doppelangriff, gewinnt den ♙b5 oder den ♞d8
- 52: 1...♖f3 (droht ♖g2#) 2.♖xf3 ♞xe1#
- 53: 1.♞c8+ ♗xc8 2.d7 ♗d6 (2...♗e7 3.dxc8♖) 3.d8♖+
- 54: 1...♞xc5 Figurengewinn (ungedeckter Turm auf h4: 2.bxc5 ♞a4+ 3.♗e3 ♞xh4)
- 55: 1...♖xc4 2.♖xc4 ♗e3+ und 3...♗xc4. Figurengewinn
- 56: 1...♙d4. Doppeldrohung ♙xa7 und ♖xg3. Gewinnt mindestens die Qualität.
- 57: 1...♖g4+ 2.♞xg4+ fxg4#
- 58: 1.♞c6+ ♗xc6 2.♖c8+ ♗d5 3.♖xc3
- 59: 1.♙b6 ♙xb6 2.g7 nebst g8♖

- 60: 1.♖xe3 Figurengewinn
61: 1.♖g7+ ♘h8 2.♖c7 Figurengewinn wegen der Doppeldrohung ♖xc3 und ♖c8#
62: 1.♖xf4 gewinnt eine Figur (1...♗xf4 2.♗xd3 oder 1...♖xe3 2.♖xf7)
63: 1...f3 2.gxf3 (2.c7 ♘d7; 2.g3 hxg3 3.♘e3 g2) 2...h3 nebst h2 und h1 ♗
64: 1...♖xf2 gewinnt eine Figur (2.♖xf2 ♖xb1)
65: 1.♗h7+ ♘f8 2.♗h6+ ♘g8 3.♗xe3
66: 1.f3 (1.♘c6? f3; 1.b5? f3) mit gewonnenem Bauernendspiel
67: 1.♖xg6+ ♘f8 2.♖xb6 Figurengewinn
68: 1.♘g6+ hxg6 2.♖h3#
69: 1...♖af8 gewinnt den gefesselten Springer (bzw. Springer und Dame gegen zwei Türme)
70: 1.♗xe4 gewinnt eine Figur wegen 1...♖xc1 2.♗xh7+ (Zwischenzug) ♘h7 3.♖xc1
71: 1...♗h4 2.♗f3 (2.♗h3 ♗xe1; 2.♗xh4 ♗xg2#) 2...♗xe1 Turmgewinn
72: 1.♗h6 f5 (1...♗xh6 2.h8 ♗#) 2.h8 ♗+ ♘f7 3.♗6xg7#
73: 1.♗a8 ♖xa8 (1...♗xf6 2.♗xd8+ ♗xd8 3.♖xd8+) 2.fxe7 ♖e8 3.♖d8
74: 1...♖xf2+ 2.♘d3 (2.♘xf2 patt) 2...♖d2+ 3.♘d2 patt
75: 1.♖d7 und Gewinn des ♗g7 (1...♗xd7 2.♘b6+)
76: 1.e5 ♗e7 2.♗xa8 ♗xa8 3.♗xa8 ♖xa8 Qualitätsgewinn
77: 1.♗g4. Doppeldrohung ♗xg7# und ♘xh6+ mit Damengewinn
78: 1...♖h1 droht c1 ♗, gewinnt den Turm wegen 2.♖xc2 ♖h2+ 3.♘f3 ♖xc2
79: 1.f4 gewinnt eine Figur (1...♗xf4 2.♖xe8)
80: 1.♗f2 gewinnt die Dame wegen der Abzugsdrohung 2.♖g7+
81: 1...♗e4 gewinnt die Dame wegen der Mattdrohung auf h2
82: 1.♖xf6 gewinnt eine Figur. 1...gxf6 (1...♗xf4 2.♖xf4) 2.♗xc7
83: 1.♗xc6 dxc3 2.♗xd8 ♖axd8 3.♗f3. Figurengewinn.
84: 1...♗xh4+ 2.♘f3 ♗xf4+ 3.♘xf4 ♗g5+ 4.♘e4 ♗xd2 gewinnt eine Figur
85: 1...♘d4 gewinnt den ♗e2, der nicht mehr sinnvoll gedeckt werden kann
86: 1.♗h7+ ♘h7 2.♗xf8 Qualitätsgewinn
87: 1.♗e4+ ♘a7 2.♖xe8 Turmgewinn
88: 1...♖c4 gewinnt den Springer (2.♘c3 ♖cxc3 3.bxc3 ♖xb1+)
89: 1...♗h4 2.gxh4 (sonst 2... ♗xg3) 2...g3 3.hxg3 h2 und 4... h1 ♗
90: 1...♖xc4 gewinnt eine Figur (2.bxc4 ♗e3#)
91: 1.♖e8 nebst Matt
92: 1.♗g2, Damengewinn
93: 1.♗xg5+ fxg5 2.♘h6+ ♘h8 3.♖xf8+ ♗g8 4.♖xg8#
94: 1.♖1e6, die Drohung 2.♖xg6+ kann nicht mehr sinnvoll abgewehrt werden
95: 1.♗d5 ♗xd5+ (1...♗xg7 2.♗c6#) 2.b3+ ♘b5 3.c4+ +-
96: 1...♘b4 gewinnt mindestens die Qualität
97: 1.♘f7+ (1.♘xe8? ist vorteilhaft für Schwarz) 1...♘g8 2.♘h6+ ♘h8 3.♗g8+ ♖xg8 4.♘f7#
98: 1.♗g5, Damengewinn
99: 1...♖xd4 2.cxd4 [2.h7 ♘f2+ wird auch matt] 2...♘f2+ 3.♗xf2 ♖c1+ 4.♗g1 ♖xg1#
100: 1...♗xg2+ 2.♘xg2 ♘f3+ 3.♘f1 ♘xh2+ 4.♘e1 ♘f3+ 5.♘f1 ♖h1#
101: 1...♗xb4 2.axb4 ♗h4 +-
102: 1...♗c2+ 2.♘xc2 d1 ♗+ +-
103: 1.♘xf8 ♗xf8 [1...♗xa3 2.♘g6+ ♘h7 3.♘xe7 ♖xc1 4.♖xc1 ♗xe7+-] 2.♗b3 +-
104: 1.♗g6+ ♘g8 2.♖h8+ ♘h8 3.♗h3+ ♘g8 4.♗h7#
105: 1...♗xe4 2.fxe4 ♗g3 3.♖g4 ♖f2 +-
106: 1...♗d4+ +- (2.cxd4 ♗b1+ 3.♘e1 ♗xe1+ 4.♗e1 ♖xe1#)
107: 1...♗f3 (droht 2...f6#) 2.♗e5 f6+ 3.♗xf6 ♗g4#
108: 1...♖xe3 +-
109: 1.♗xg6+ ♘h8 (1...fxg6 2.♖g7+ ♘h8 3.♖h7+ ♘g8 4.♖cg7#) 2.♗f6+ ♘g8 3.♗xb2+-
110: 1.♘xf7 +- (Doppeldrohung ♗xe6# und ♖xa5)
111: 1...♘f3+ 2.gxf3 ♗xd4 3.cxd5 -, gewinnt die Dame für zwei Leichfiguren
112: 1...♗xg3 -, gewinnt eine Figur
113: 1.♖e8+ ♘f6 2.♗e5+ ♘g6 3.♖g8+ ♗g7 4.♗g5#
114: 1.♗a8#
115: 1...d5 gewinnt eine Figur.
116: 1...♖xb2 2.♖xb2 ♗xd4+ 3.♖f2 ♗xc5 +-
117: 1.♖xd7 mit Figurengewinn. 1...♖xd7 2.♖b8+ und Grundlinienmatt.
118: 1...♘e2+ gewinnt die Dame (2.♖xe2 ♗c1+ 3.♘g2 ♗f1#)
119: 1.♘f5 (1...exf5 2.♗xc8+ ♘xc8 3.♖e8#)
120: 1.♗f3 gewinnt wegen der Drohung 2.♗a8# den ♖h5

- 121:** 1.♔g7+ ♕xg7 2.♖d8 ♕f8 3.♗xf8#
122: 1...♗d5 +- Doppelangriff auf ♖d1 und ♕g5 (2.♙xd5 ♖g1+ und matt)
123: 1.♙xh8 ♖xh8 2.♕e5 ♖g7 3.g5 +-
124: 1...♙xb4 gewinnt eine Figur, denn 2.♗xb4 ♗f3 wird matt.
125: 1.e5 +-, das Matt nach 2.♕h6 lässt sich nicht mehr verhindern
126: 1.♙xe5 +- gewinnt wegen der ungedeckten ♗c2 eine Figur. 1...♗xf5 2.♙xf5 oder 1...dxe5 2.♗xc2
127: 1.♖d1 +-, 1...♙xd1 2.♙xc3 oder 1...♙xe3 2.♙xd8+ ♖h7 3.♗xe3
128: 1.♕d4 gewinnt den ♖c6 (die ♗a8 ist nicht gedeckt)
129: 1...♕h2+ 2.♖h1 ♕xf2+ 3.♙xf2 ♕xc2 +- (oder auch 1...♕xf2 +- 2.♕xg6? ♕h2+ 3.♖xf2 ♗g3#)
130: 1.♕d4 +- gewinnt einen wichtigen Zentralbauern
131: 1...♗c1+ 2.♗xc1 ♖xc1+ 3.♖d2 ♖xh1 +-
132: 1.♗f6+ (1.♙xa2? ♗b1+ 2.♖h2 ♗xa2 ist unklar) 1...♗xf6 2.exf6+ ♖xf6 3.♙xa2 +-
133: 1...♙xe3 2.♙xc6 (2.♗xc6 bxc6 3.♙xc6 ♖xe5 =) 2...♖e1+ 3.♗g1 ♖xg1+ 4.♖xg1 bxc6 =
134: 1.♖c7 gewinnt wegen der zweiten Drohung 2.♗xf7+ den ♕b7 +-
135: 1...♖c8 2.♗xb8 ♖xc1+ 3.♕f1 ♖xb8 +-
136: 1...♙xf3+ 2.♗xf3 (2.gxf3 ♗xc6 -+) 2...♗a4#
137: 1.♙xd8+ ♙xd8 2.♗f6 (oder auch 2.♗c7) +-, Doppelangriff und Figurengewinn
138: 1.♗xd7 ♗xd7 2.a7 +-
139: 1.♗f3+ ♖g5 2.♗g3+ und Gewinn des ♕f4, +-
140: 1...♙xd2 2.♗xd2 ♖c2 +-
141: 1...♕c5 +-
142: 1...♙xd2 +-, Figurengewinn
143: 1...♕xg3+ 2.hxg3 ♗h6+ nebst Matt
144: 1...♖f1+ 2.♖e2 (2.♖xf1 ♗xe3) 2...♕c4+ +-
145: 1.♙xg7+ (oder zuerst 1.♗xc7+) 41...♖xg7 2.♗xc7+ ♗xc7 43.♕e8+ ♖f7 44.♕xc7 +-
146: 1...♗xh2+ 2.♖xh2 ♖h6+ 3.♖g1 ♖h1#
147: 1.f4+ gxf3 (1...♖h5 2.♗h8#) 2.♗f4+ ♖h5 3.♗h4#
148: 1.♖h4 +-, Damengewinn
149: 1.♙xa6+ bxa6 (1...♖b8 2.♙a8#) 2.♗xa6+ ♖a7 3.♗xc6+ ♖b7 4.♗xb7#
150: 1.♗xd3 +-, Turmgewinn